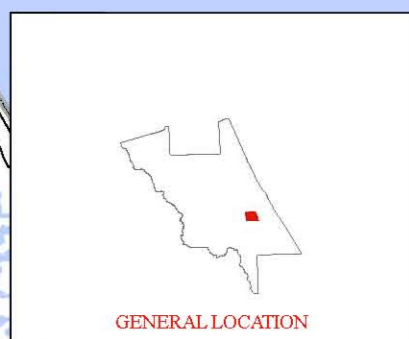
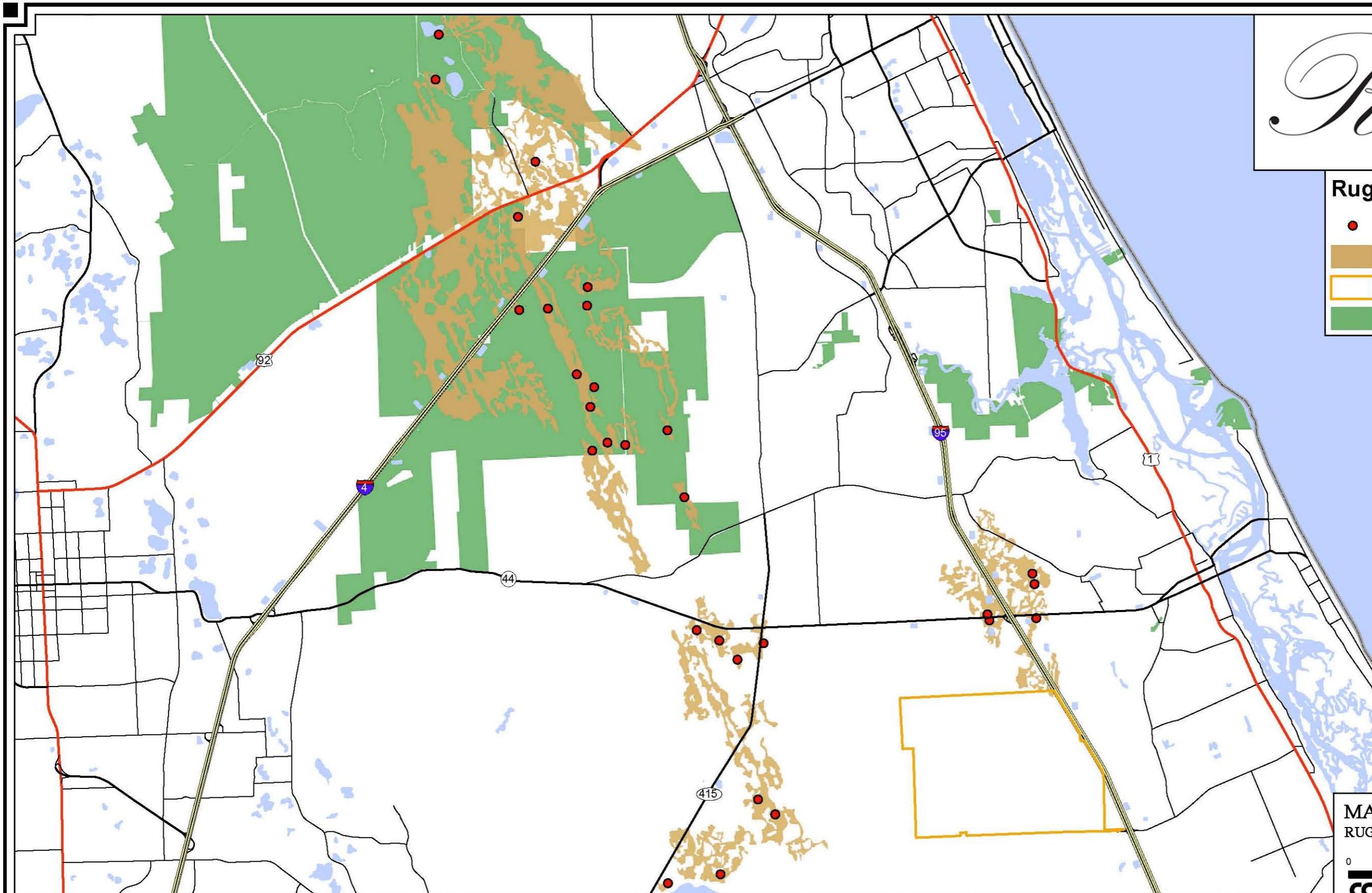


RESTORATION

Rugel's Pawpaw Range

- Rugel's Pawpaw (FNAI)
- Soils With Rugel's Pawpaw
- Restoration Boundary
- Public Lands (June 2006)



MAP G2
RUGELS PAWPAW RANGE

0 2,000 4,000

CANIN ASSOCIATES
Urban & Environmental Planners • Landscape Architects
500 Delaney Avenue, Orlando, Florida 32801 (407)422-4040

DATE	SCALE	JOB NUMBER	SHT. NO.
30 AUG 06	1"=2000'	205115	1 of 1

WWW.CANIN.COM COPYRIGHT (C)2005 CANIN ASSOCIATES, INC.

HAMMOCK CREEK GREEN, LLC
OWNER/APPLICANT

CANIN ASSOCIATES, INC.
PLANNING & LANDSCAPE ARCHITECTURE

DONALD W. McINTOSH ASSOCIATES, INC.
CIVIL ENGINEERS

BREEDLOVE, DENNIS & ASSOCIATES, INC.
ENVIRONMENTAL SCIENTIST

KIMLEY-HORN AND ASSOCIATES, INC.
TRANSPORTATION

FISHKIND & ASSOCIATES, INC.
ECONOMICS

BAKER & HOSTETTLER, LLP
LEGAL